



BOTTOMFIT

BBB BOTTOM BRACKET / BBO-09/29

BBB CYCLING.COM
ROOSEVELTSTRAAT 46, 2321 BM
LEIDEN, THE NETHERLANDS

EN MANUAL / DE HANDBUCH / FR MANUEL / NL HANDLEIDING / ES MANUAL / PT MANUAL /
IT MANUALE / HU HASZNÁLATI UTASÍTÁS / PL PODRĘCZNIK / CZ UŽIVATELSKÁ PŘÍRUČKA
/ JP 使用説明書 / RU РУКОВОДСТВО ПОЛЬЗОВАТЕЛЯ / SK MANUÁL / NO HÅNDBOK

Components:

- ① Bottom bracket shell
- ② Non-drive side cup (x1)
- ③ Drive side cup (x1)
- ④ 2.5mm spacers
- ⑤ ShimSet spacers
- ⑥ Wave spring washer

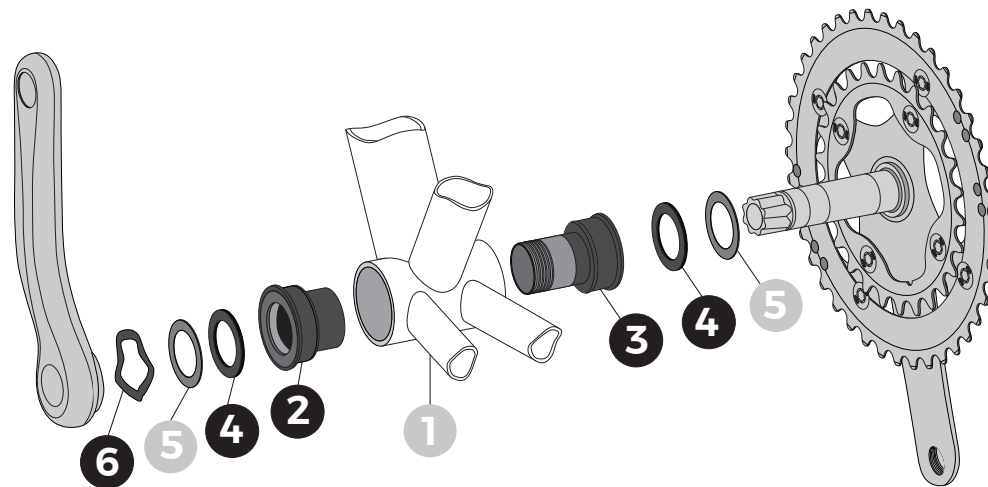
● Included ● Not Included

Compatibility:

- BBO-09:**
- PF30 (68/73 x Ø46mm) + Ø30mm spindle BB30 cranksets
- BBO-29:**
- BB86/92 (86.5/89/91.5 x Ø41mm) + Ø24mm spindle cranksets

Recommended tools:

- BTL-120 x2 for BBO-09
- BTL-27L x2 for BBO-29
- BTL-95 Bottompress toolset
- Grease
- PTFE (Carbon BB shell)
- Anti-seize (Ti BB shell)

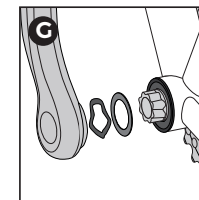
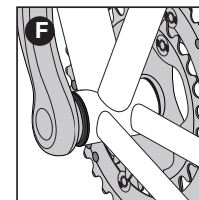
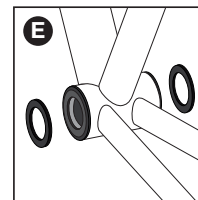
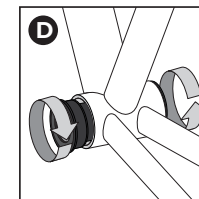
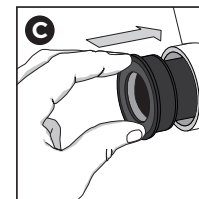
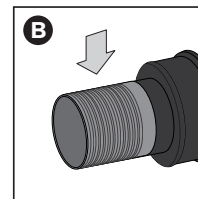
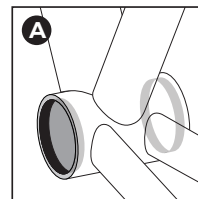


IMPORTANT:

- * Before installing a bottom bracket, use a reaming tool if required and make sure the bottom bracket (BB) shell ① is clean and free of metal chips, dirt and excess paint.
- * Inspect the BB shell for width, ID, ovalization or anything that could cause potential problems.
- * Always use a calibrated torque wrench to tighten crank bolts.
- * BBB Cycling cannot guarantee compatibility with you frame and/or crank combination, consult your manufacturer for compatibility.
- * BBB Cycling cannot be held responsible for any damage occurred.

INSTALLATION:

- A. After checking BB shell ① carefully, apply a thin layer of grease, PTFE (for Carbon) or anti-seize compound (for Ti) on the inside surface of BB shell ①.
- B. Apply a little bit of grease on the cup threads. DO NOT use PTFE, anti-seize or thread locking compound.
- C. First insert the drive side cup ③ preferable with a press tool, then insert non-drive side cup ② until the threads engage while making sure you do not cross-threads the cups.
- D. Use the BracketGrip cup tools to tighten until the lip of the cups are flush against the BB shell ① (Max. 40Nm, for Carbon shells lower torque is recommended.).
- E. - BBO-09: If your BB shell ① is 68mm wide and you are trying to assemble an MTB crank, you might need to add a 2.5mm spacers ④ on each side (depends on crank brand/type).
- BBO-29: If your BB shell ① is 89mm wide, add the 2.5mm spacer ④ on the Drive-side.
- F. Install crankset following manufacturers specifications.
- G. Add the Wave spring washer ⑥ if needed to add preload on the bearings and crankset. Add ShimSet spacers ⑤ if necessary to take up any play or adjust chainline.
If binding occurs, try removing spacers or the Wave spring washer ⑥.



Find your translation on
BBBcycling.com



WARNING

Sold only by professional bicycle dealers.
For proper installation, ask your BBB dealer.
Not following the instructions in this manual may cause damage to the product not covered under warranty, damage to the bicycle, or cause an accident resulting in injury or death.